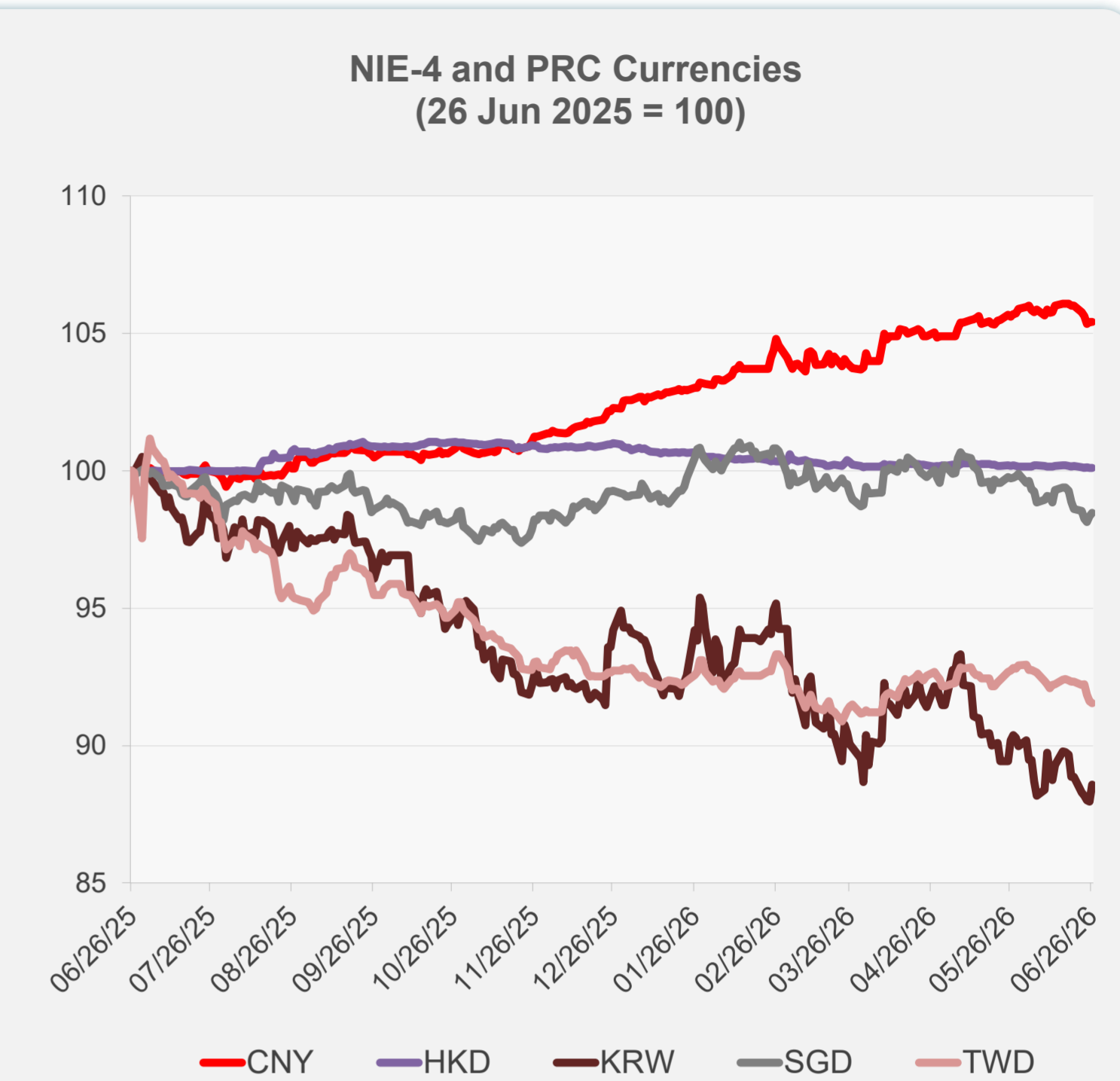
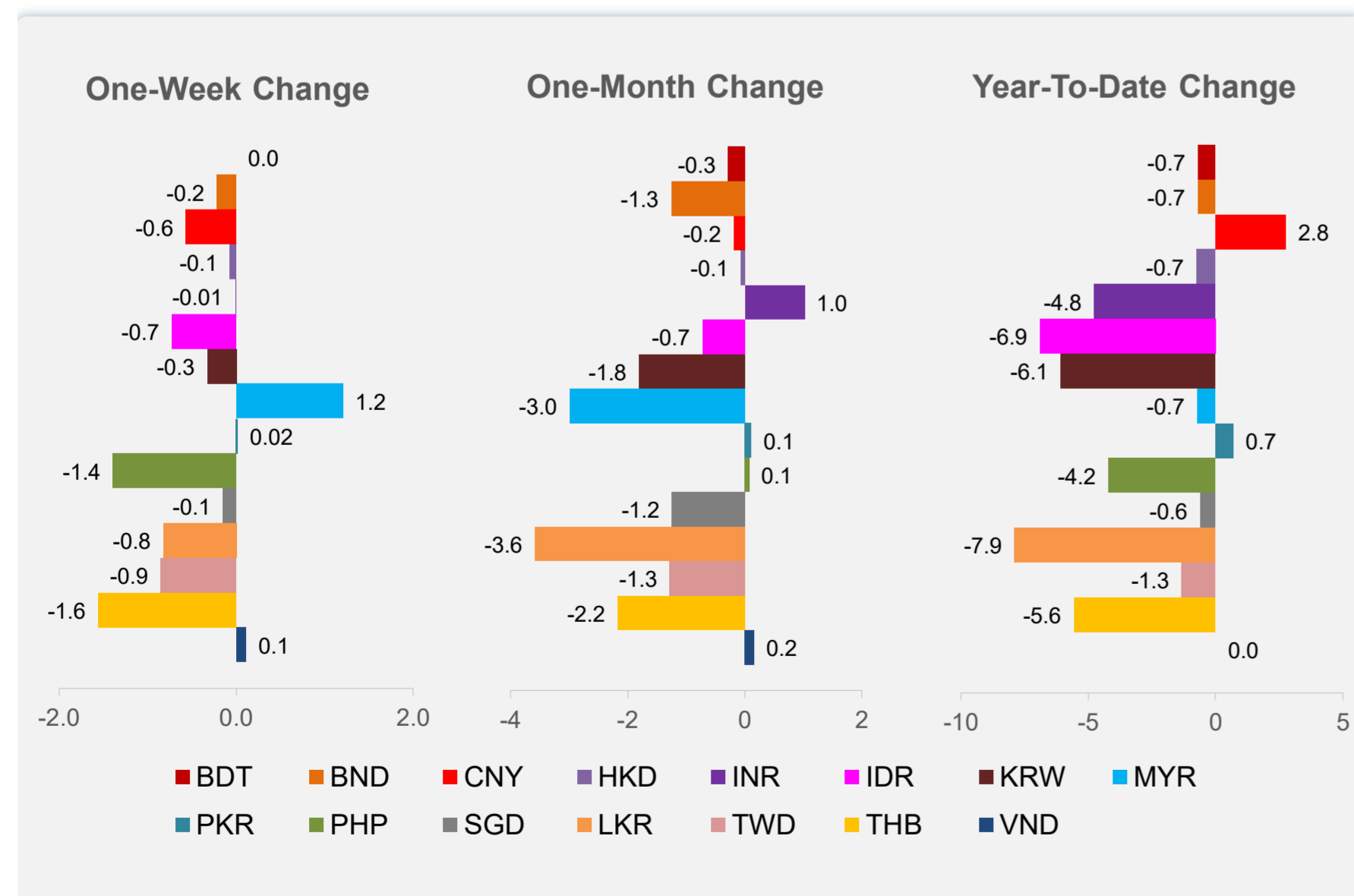
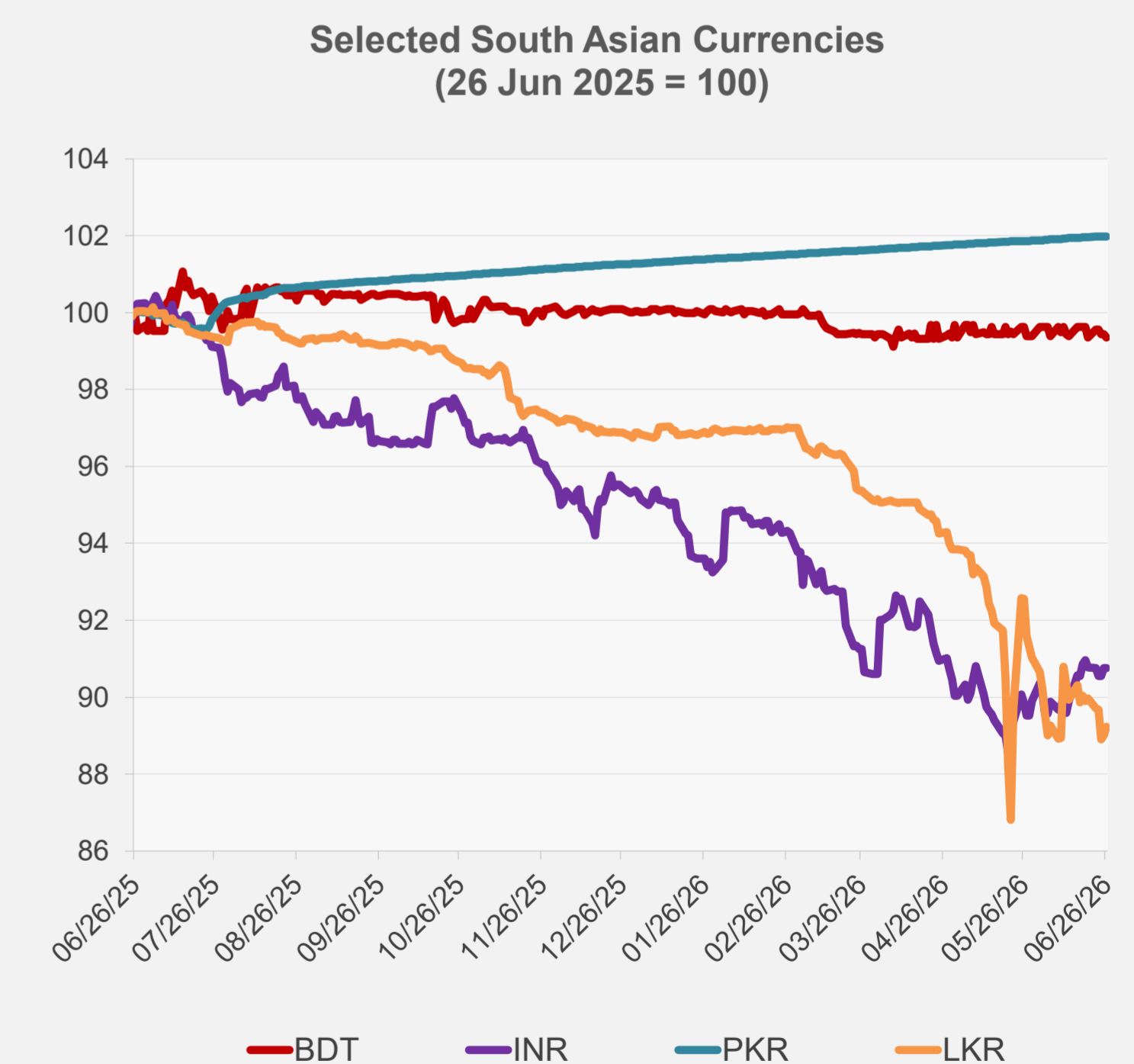
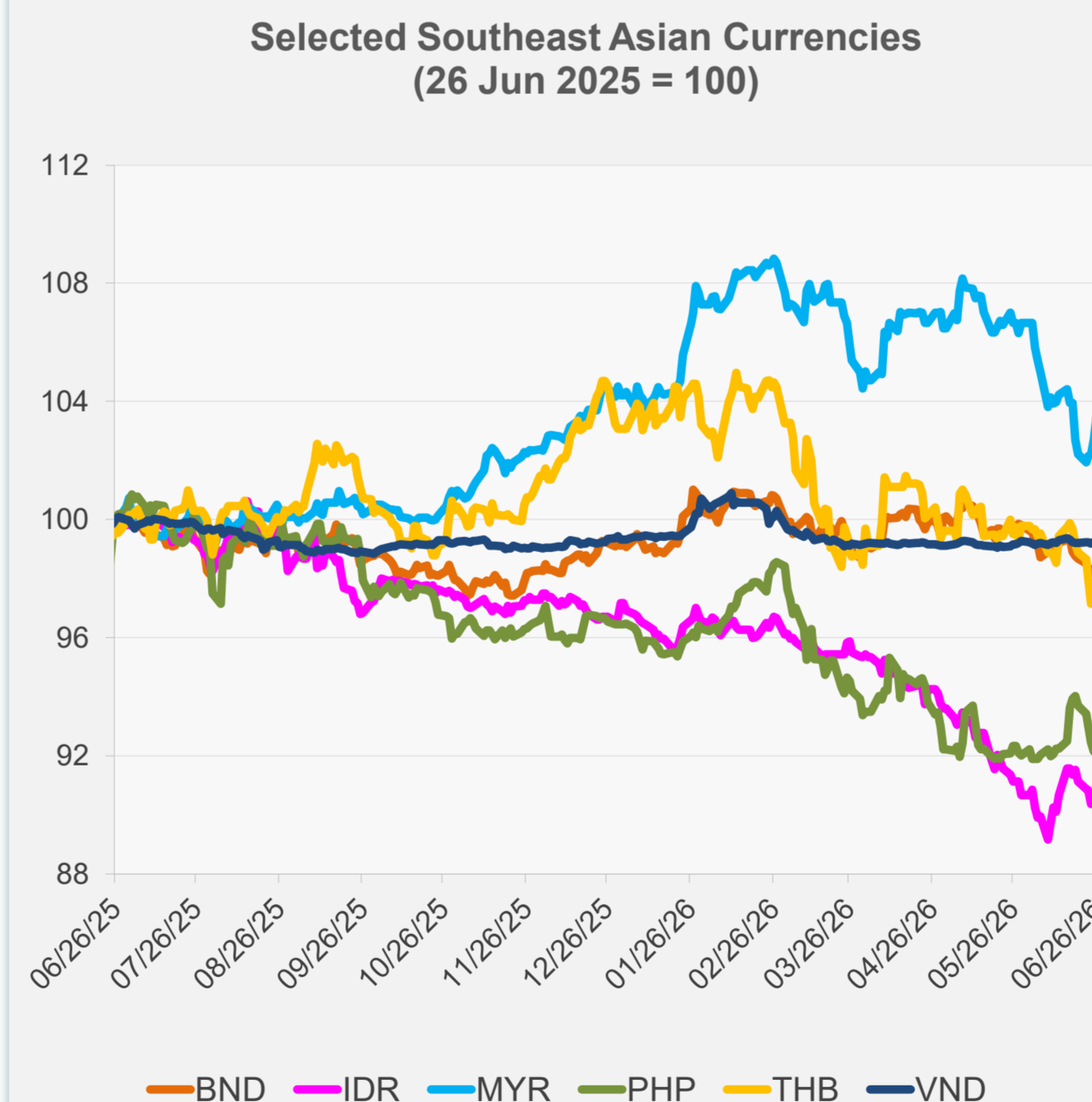


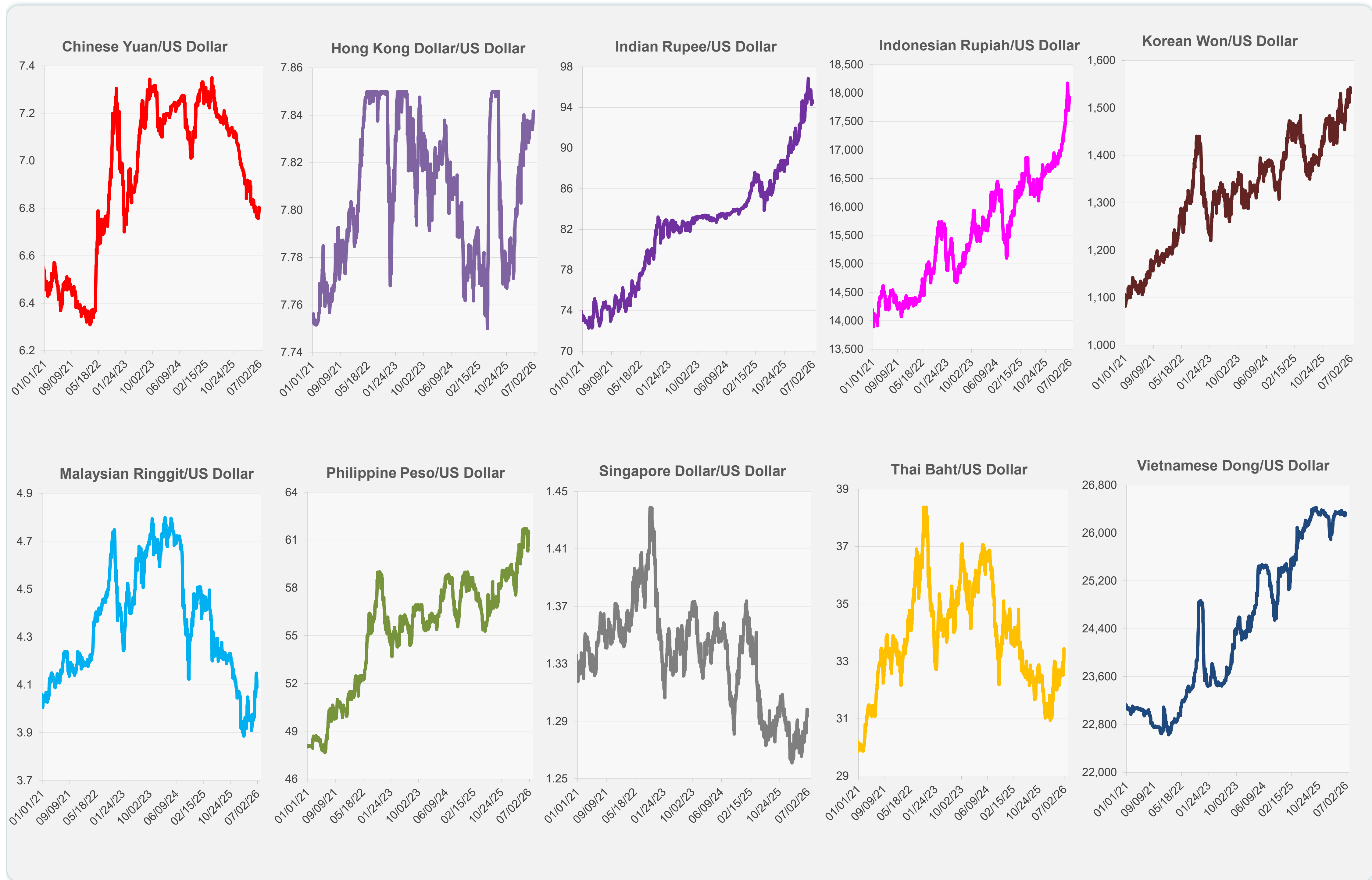
	Latest Closing	% change from Previous Day	% change from 01-Jan-26
Euro	0.88	0.16	-2.98
Japanese yen (JPY)	161.63	0.12	-3.50
Bangladeshi taka (BDT)	123.10	-0.08	-0.69
Brunei dollar (BND)	1.29	0.18	-0.70
Chinese yuan (CNY)	6.80	-0.02	2.76
Hong Kong dollar (HKD)	7.84	-0.01	-0.74
Indian rupee (INR)	94.48	0.00	-4.76
Indonesian rupiah (IDR)	17,910.00	0.06	-6.90
Korean won (KRW)	1,532.00	0.70	-6.07
Malaysian ringgit (MYR)	4.09	0.73	-0.72
Pakistan rupee (PKR)	278.17	0.00	0.69
Philippine peso (PHP)	61.39	0.28	-4.21
Singapore dollar (SGD)	1.29	0.13	-0.60
Sri Lanka rupee (LKR)	336.14	0.26	-7.90
Taipei,China NT dollar (TWD)	31.86	-0.08	-1.32
Thai baht (THB)	33.36	-0.01	-5.57
Vietnamese dong (VND)	26,300.00	0.08	0.00



NIE = Newly Industrialized Economies



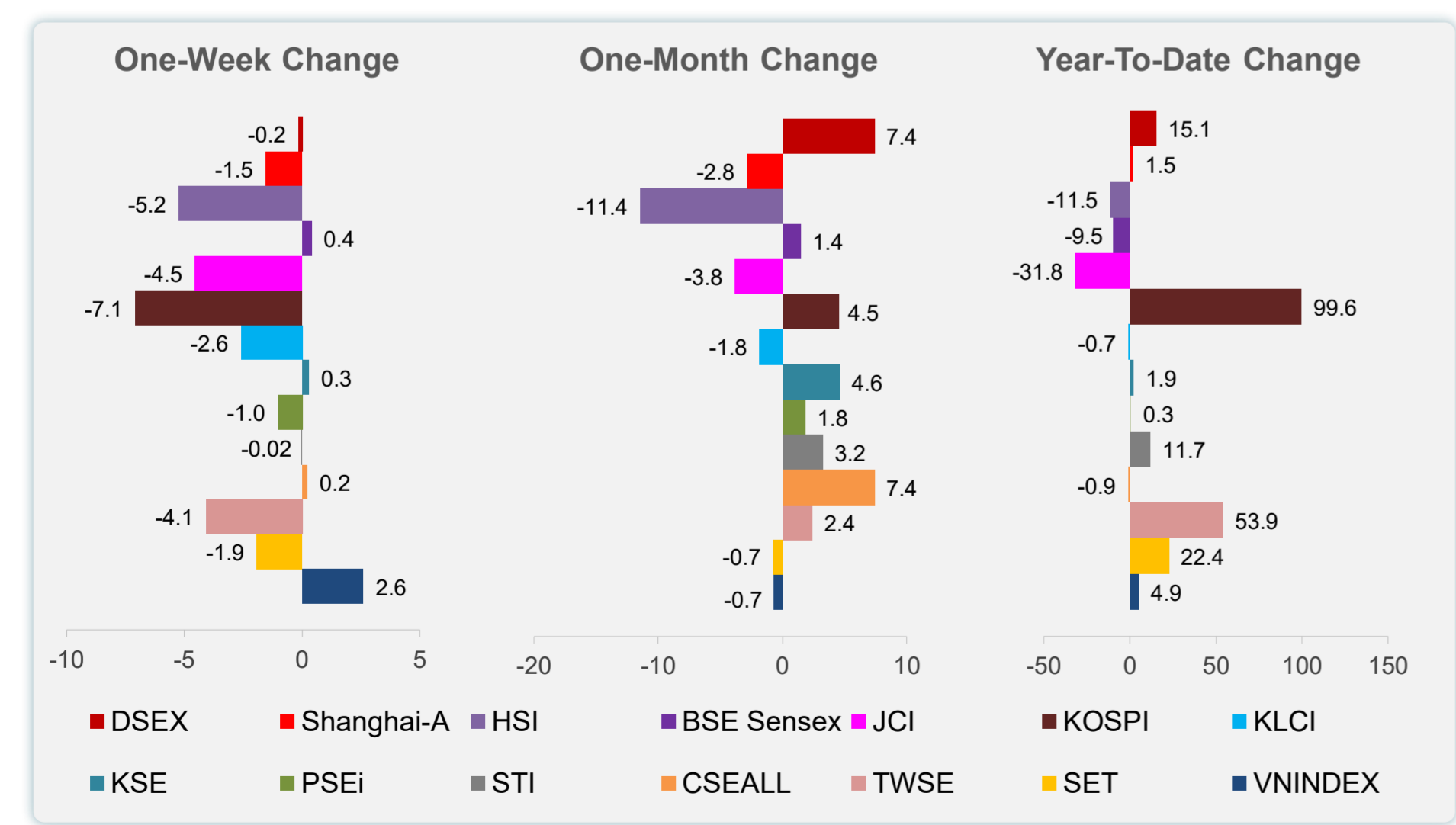
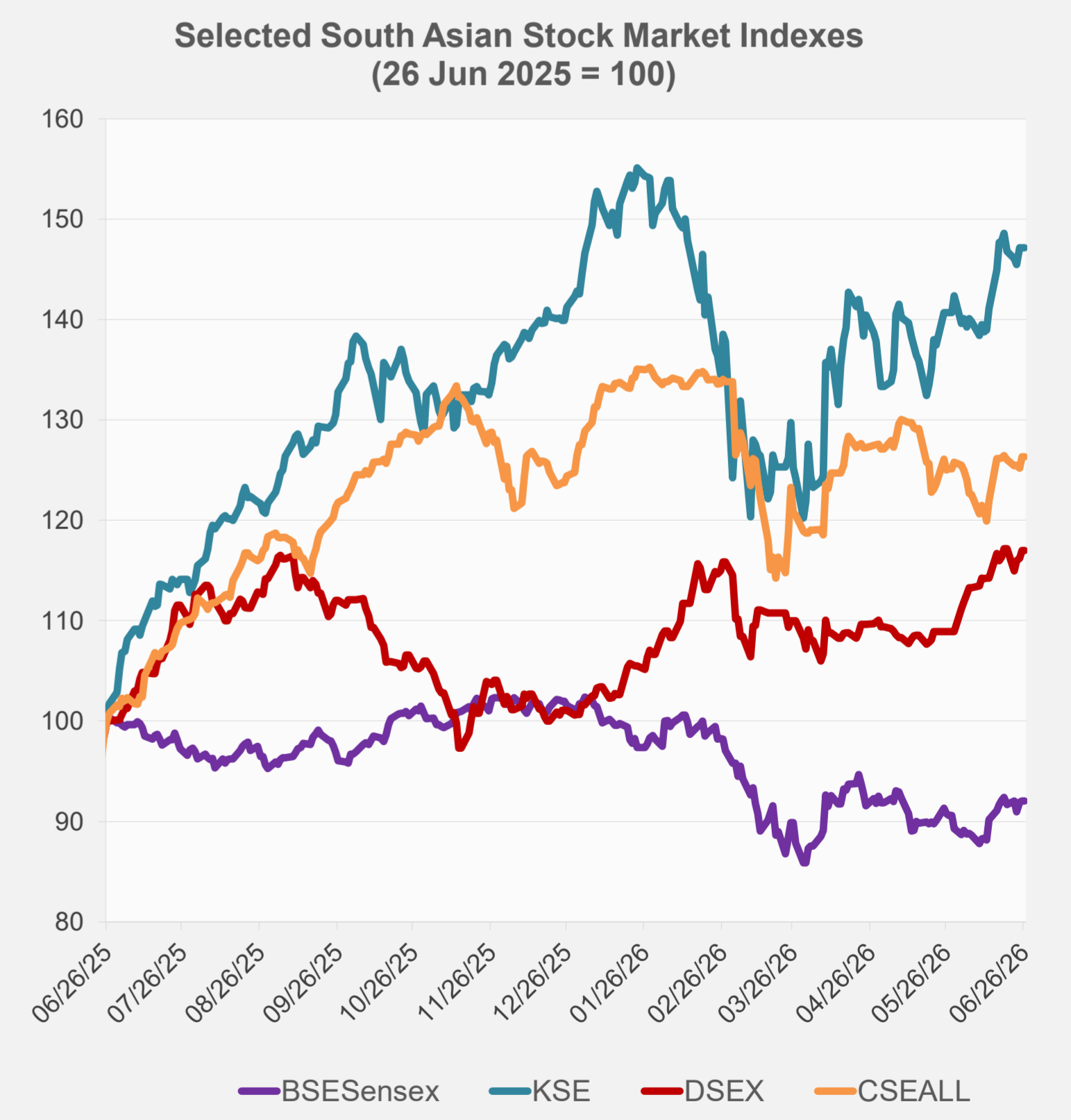
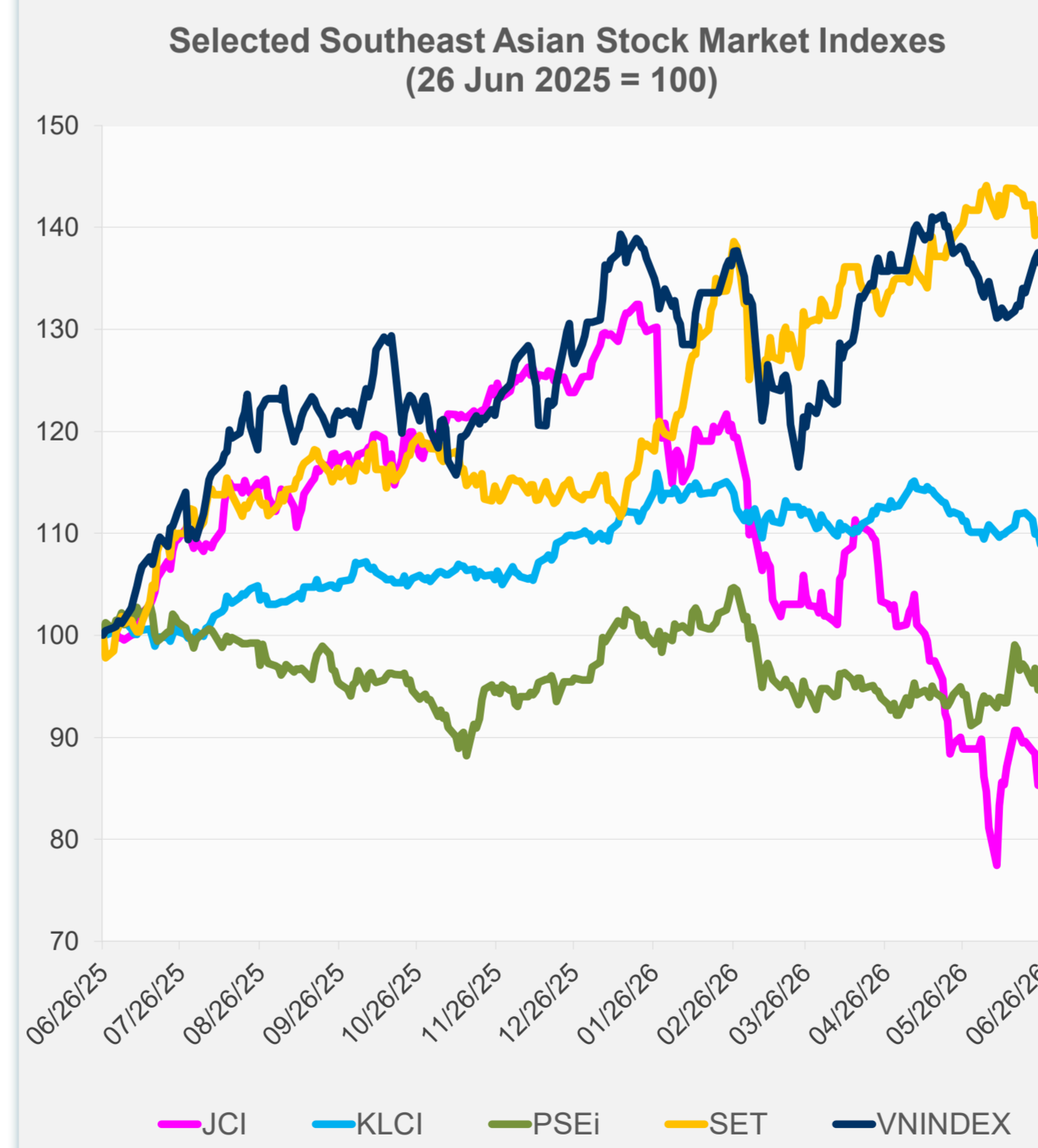
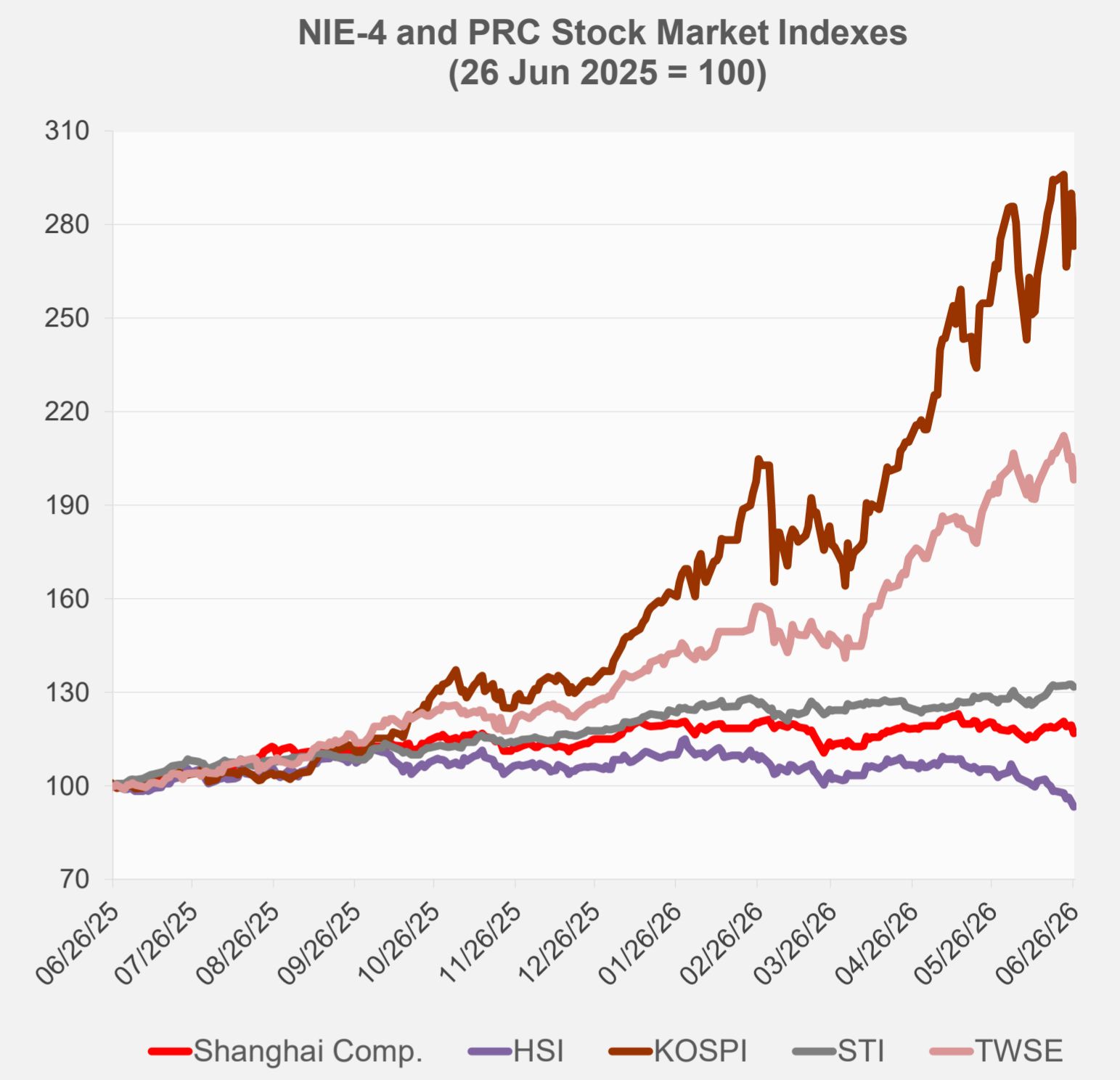
Note: Negative/Decreasing values indicate depreciation of local currency, and positive/increasing values indicate appreciation.
Source: ADB calculations using data from Bloomberg and Haver Analytics.



Source: Haver Analytics.

Daily Market Watch
STOCK INDEXES

	Latest Closing	% change from Previous Day	% change from 01-Jan-26
US Dow Jones Ind Avg	51,876.11	-0.09	7.93
US NASDAQ	25,297.62	-0.24	8.84
US S&P 500	7,354.02	-0.05	7.43
UK FTSE 100	14,274.02	0.10	26.75
EURO STOXX 50	6,221.55	-0.73	7.43
Japan NIKKEI 225	69,360.88	-4.15	37.79
Bangladesh DSEX	5,652.82	0.00	15.11
PRC Shanghai Comp.	4,027.26	-2.26	1.47
Hong Kong, China HSI	22,671.86	-1.76	-11.54
India BSE Sensex	77,100.47	0.00	-9.49
Indonesia JCI	5,896.13	-1.72	-31.81
Korea, Rep. of KOSPI	8,411.21	-5.81	99.59
Malaysia KLCI	1,667.74	0.24	-0.74
Pakistan KSE 100	179,823.70	0.00	1.90
Philippines PSEi	6,072.24	0.02	0.32
Singapore STI	5,191.73	-0.52	11.74
Sri Lanka CSEALL	22,409.81	0.01	-0.95
Taipei, China TWSE	44,571.76	-3.64	53.89
Thailand SET	1,542.34	-1.04	22.44
Viet Nam VNINDEX	1,871.91	0.47	4.90



Sources: ADB calculations using data from Bloomberg and CEIC Data Company.



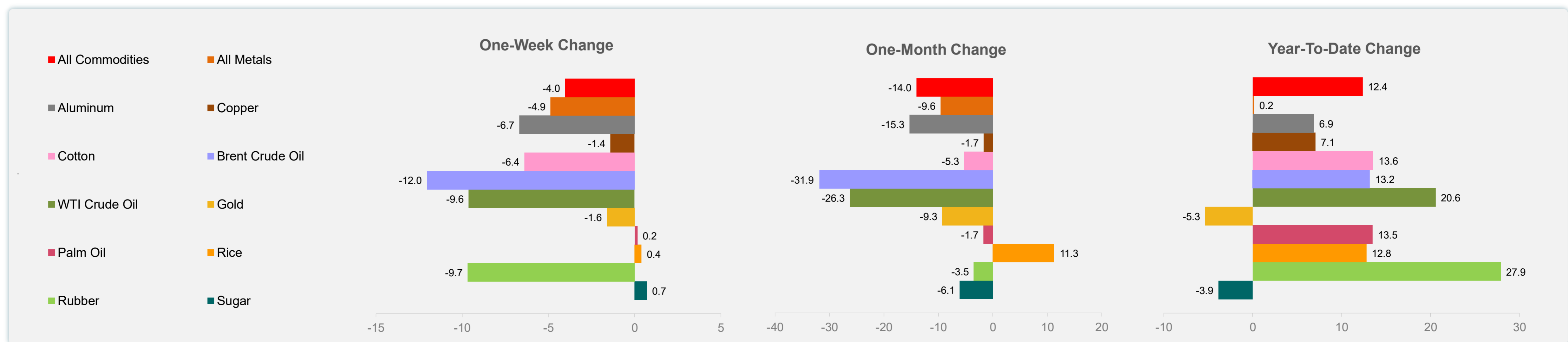
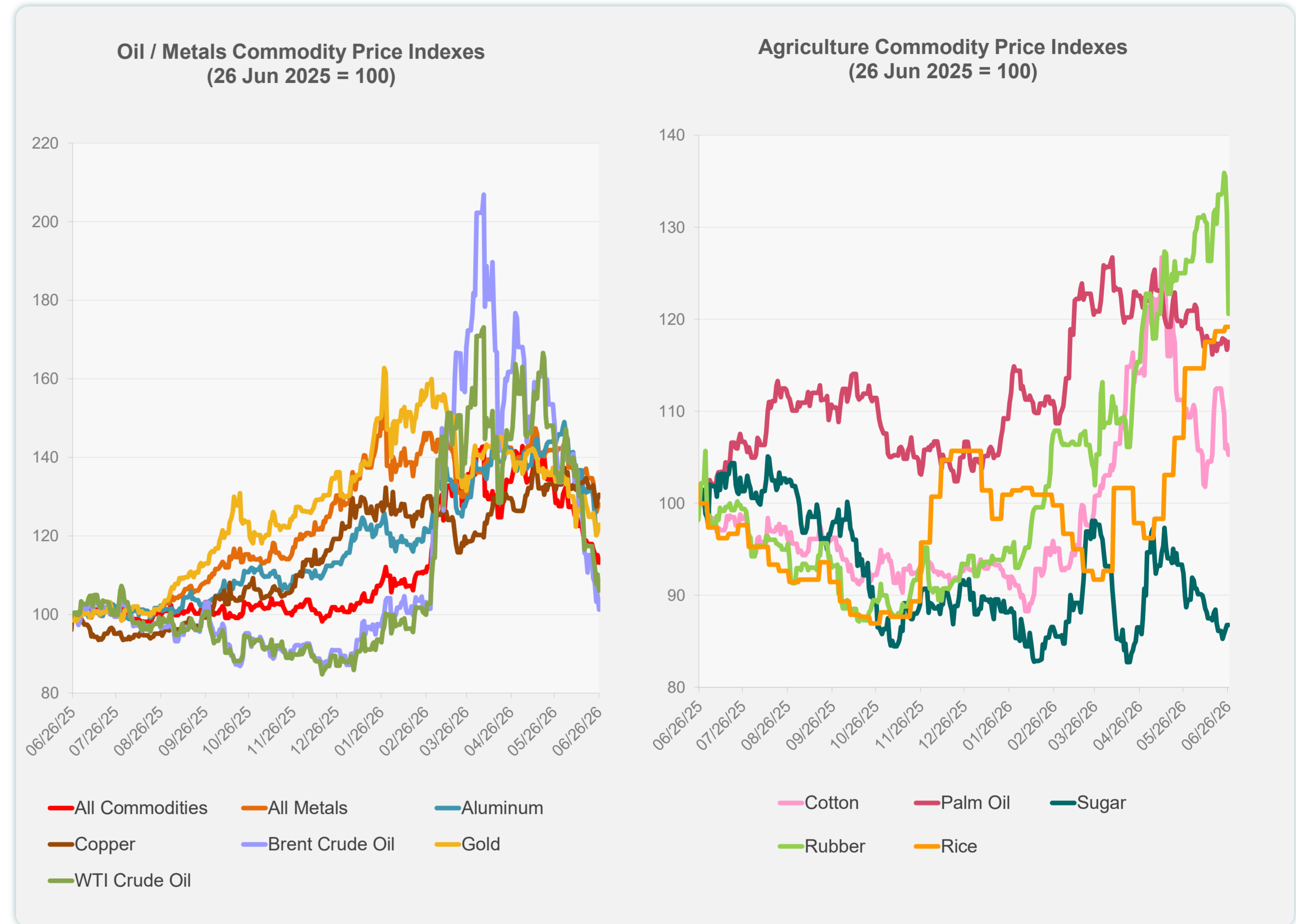
Sources: ADB calculations using data from Bloomberg and CEIC Data Company.

Daily Market Watch
COMMODITY PRICES

29 June 2026, 9:00 AM Manila

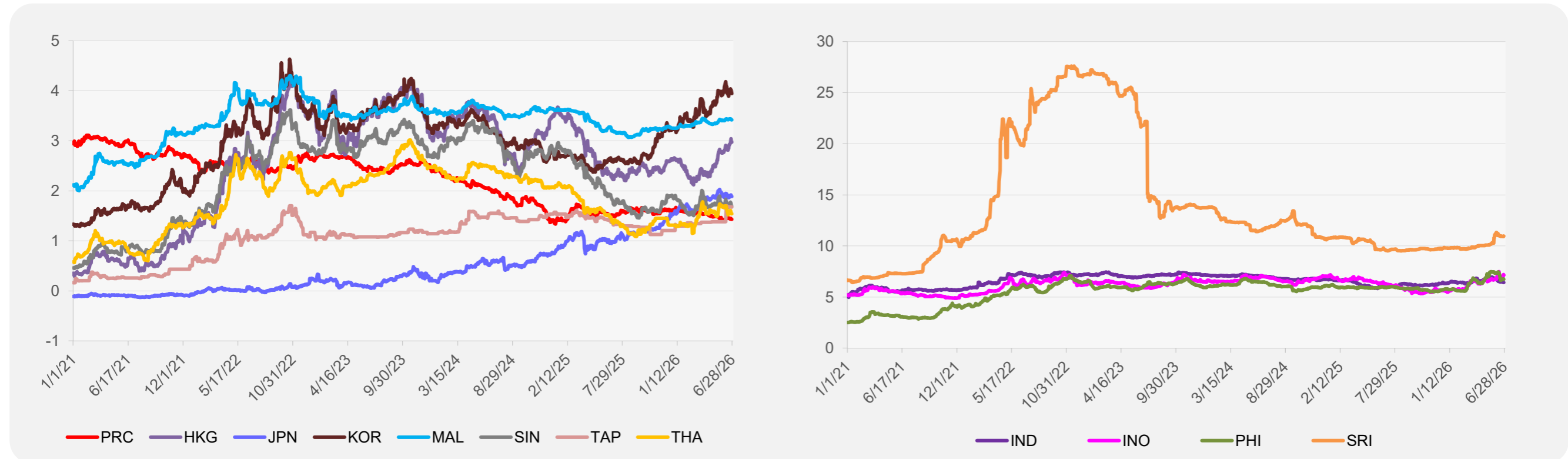
	Unit	Latest Closing	% change from Previous Day	% change from 01-Jan-26
S&P All Commodities	US\$	616.27	-1.70	12.35
S&P All Metals	US\$	444.50	0.73	0.17
Aluminum	US\$/metric ton	3,172.80	0.62	6.90
Copper	US\$/metric ton	13,335.92	0.82	7.09
Cotton	US cents/lb	70.43	-1.04	13.56
Brent Crude Oil	US\$/barrel	70.67	-3.65	13.16
WTI Crude Oil	US\$/barrel	69.23	-3.74	20.57
Gold	US\$/troy oz	4,088.74	1.54	-5.34
Palm Oil	US\$/metric tonne	1,099.29	0.73	13.49
Rice ¹	US\$/metric ton	503.00	0.00	12.78
Rubber ²	US\$/kg	275.00	-8.33	27.91
Sugar	US cents/lb	14.22	0.00	-3.85

¹ Latest closing price from 24 June 2026.
² Singapore Exchange, Ribbed Smoked Sheet Rubber.

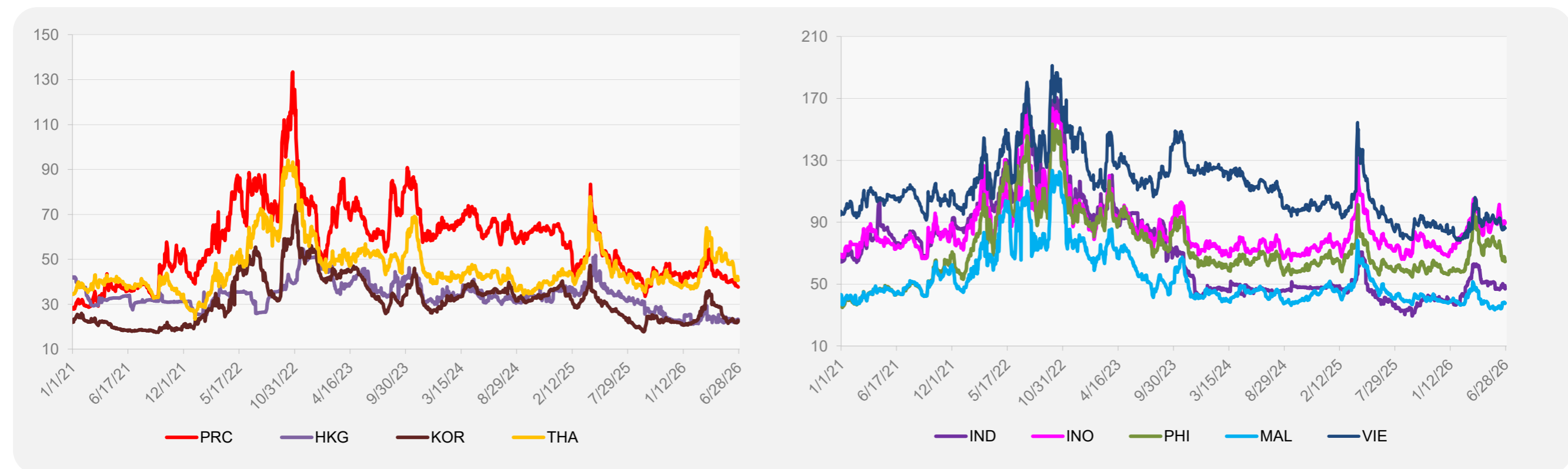


Source: ADB calculations using data from Bloomberg.

5-YEAR LOCAL CURRENCY GOVERNMENT BOND YIELDS (%)



5-YEAR CREDIT DEFAULT SWAP¹



¹ In USD and based on sovereign bonds.
Source: ADB calculations using data from Bloomberg.